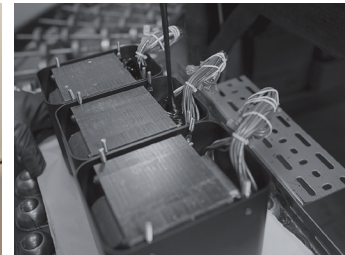


MT2 precision turntable

- The McIntosh MT2 Precision Turntable combines the latest in turntable technology and design to deliver both superb performance and accurate playback.
- Its advanced electronic and mechanical design will give you many years of smooth, trouble-free operation.
- Virtually ready to use out of the box as tracking force, anti-skate force, cartridge overhang and arm height are all preset from the factory for maximum performance. The remaining setup steps are simple and you'll be enjoying your vinyl in no time.
- The DC motor is driven by an external voltage-stabilized power supply and is completely decoupled from the chassis, isolating your records from any mechanical interference.
- Sturdy plinth has a resonance optimized and highly compressed wood base with black lacquer finish, while the top and middle acrylic plates help absorb unwanted vibrations.
- A subtle green glow emanates from under the platter and the outside edges of the plinth for a touch of refined ambiance.



Superb Performance and Accurate Playback

McIntosh®

LEGENDARY PERFORMANCE™

www.mcintoshlabs.com

MT2 precision turntable



Drive Unit:

Decoupled DC motor with stainless steel brushes

Bearing:

Polished and tempered steel shaft in sintered bronze bushings

Playback Speeds:

33-1/3 and 45 RPM

Tonearm:

Dural-Aluminum with eccentric counterweight; Vertical Tracking Angle, Antiskate, Azimuth adjustments

Cartridge:

High Output Moving Coil, 1000 Ohm active loading, compatible with moving coil and moving magnet inputs

Platter:

Dynamically balanced polyoxymethylene (POM), 5 lbs (2.3kg)

Overall Dimensions (W x H x D):

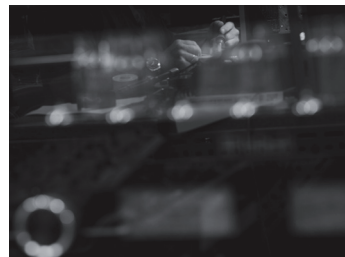
17-13/16" (45.2cm) x 5" (12.7cm) (6" (15.2cm) with dust cover) x 17" (43.2cm)

Weight:

29 lbs (13.2kg) net

For the Consumer's Protection:

In order to ensure the highest level of customer satisfaction, new McIntosh products may only be purchased from an Authorized McIntosh Dealer; and, with certain limited exceptions may only be purchased over-the-counter or delivered and installed by the Authorized McIntosh Dealer. McIntosh does not warrant, in any way, products that are purchased from anyone who is not an Authorized McIntosh Dealer, or that have had their serial numbers altered or defaced.



Companion Products

The MP100 Phono Preamp, MXA80 Integrated Audio System, MC275 and MC152 Amplifiers, MA252 and MA5300 Integrated Amplifiers and XR50 Loudspeakers are logical companions for the MT2 Precision Turntable. Your Authorized Dealer can provide additional information on other McIntosh product combinations.

To learn more, please call us at 1.800.538.6576.

McIntosh®

LEGENDARY PERFORMANCE™

www.mcintoshlabs.com