



# ESSENTIAL III

The audiophile entry-level turntable

MSRP 359 € (incl. VAT)

High gloss color options:   

- Belt drive with synchronous motor and silicone belt
- Diamond cut aluminium drive pulley
- Chassis & platter made of resonance in-sensitive MDF
- Integrated DC-powered motor control minimizes motor vibration and guarantees speed stability
- Low tolerance platter bearing with stainless steel spindle
- 8,6" aluminium tonearm with sapphire bearings
- Ortofon OM10 cartridge pre-mounted
- High-quality semi-balanced Connect it E phono interconnect with gold-plated RCA connectors included
- Special decoupling feet
- Dust cover included
- High-gloss colour options: black, red, white

**Speed:** 33, 45 (manual speed change)  
**Drive principle:** belt drive  
**Wow and flutter:** 33: 0,21% 45: 0,19%  
**Speed variance:** 33: 0,70% 45: 0,60%  
**Platter:** 300mm MDF  
**Main platter bearing spindle:** stainless steel  
**Tonearm:** 8,6", aluminium  
**Effective arm length:** 218,5 mm  
**Overhang:** 22,0mm  
**Effective tonearm mass:** 8,0 gr  
**Suitable cartridge mass:** 3 - 5,5g  
**Tracking force:** 0 - 25mn (recommended for OM10 18mn)  
**Included accessory:** power supply, dust cover, felt mat  
**Power consumption:** 4,5 watts max  
**Dimensions (lid closed):** 415 x 112 x 335mm (WxHxD)  
**Dimensions (lid open, 90°):** 415 x 365 x 390mm (WxHxD)  
**Weight:** 5,0 kg



HG piano



HG red



HG white

**Essential III - a modern classic with great sound at an attractive price!**

Essential III offers a variety of enhancements compared to its successful predecessor, such as a diamond-cut aluminum drive pulley, a resonance-optimized MDF main platter and MDF chassis. The refined, high-precision platter bearing has significantly lower tolerances than Essential II.

Essential III is the audiophile entry turntable! The setup is very simple, the included Phono RCA cable, Connect it E, sounds far above its price range.

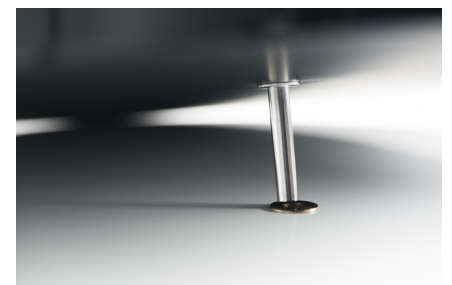
Equipped with the high-quality pickup OM10 by the phonographic cartridge pioneer Ortofon, Essential III delivers lively, balanced and highly involving sound that will delight every vinyl lover.



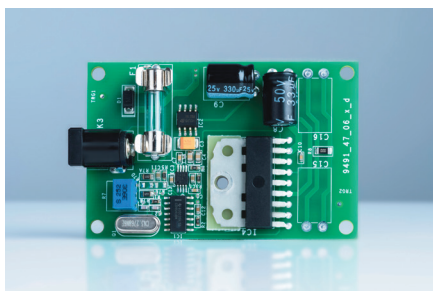
One piece 8.6" aluminum tonearm  
Cartridge: Ortofon OM10



Diamond-cut aluminum drive pulley:  
precise power transmission



Main platter bearing with low tolerances:  
reduced rumble, reduced wow & flutter



Built-in DC-powered motor control:  
better speed stability with  
minimized speed drift



Dust cover, felt mat and high quality  
connection cable Connect-it E included



Pre-mounted Connect it E